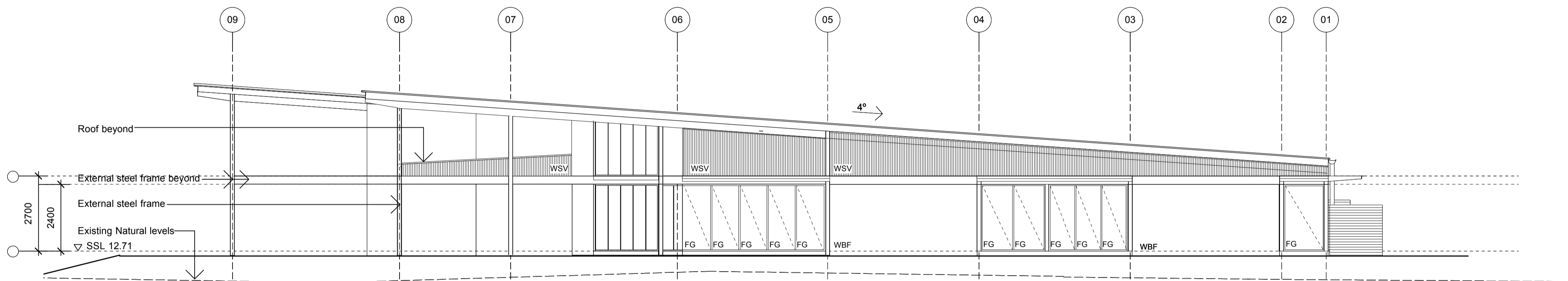
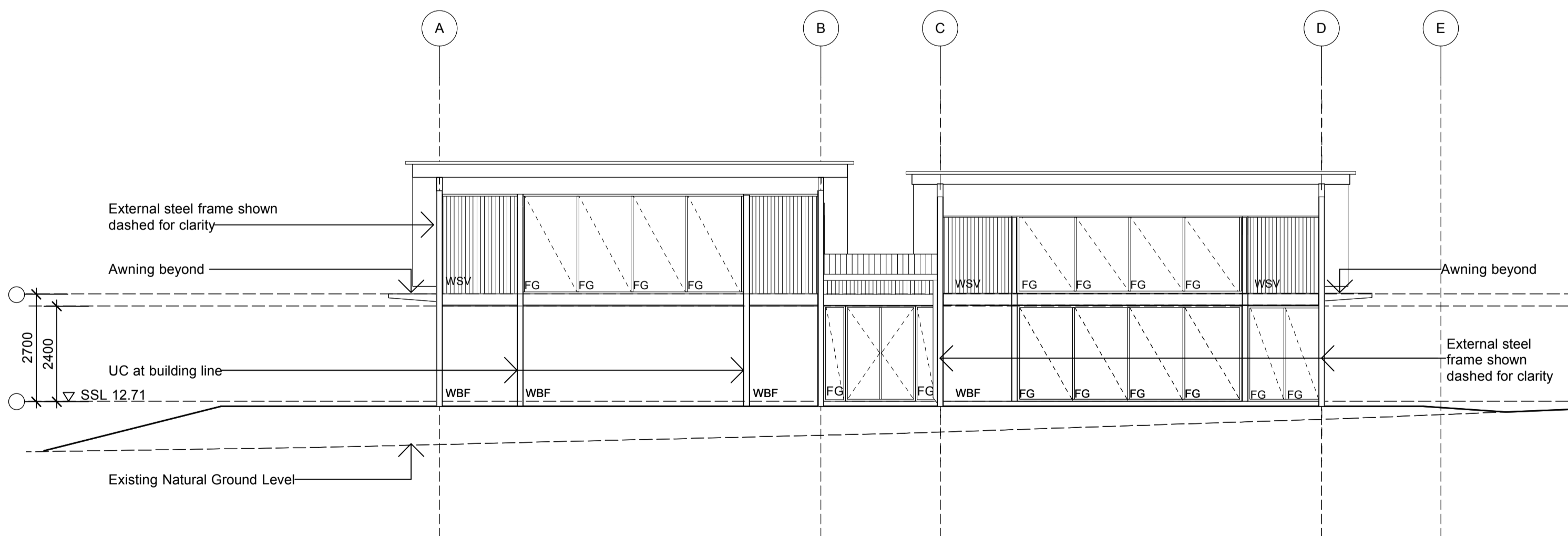


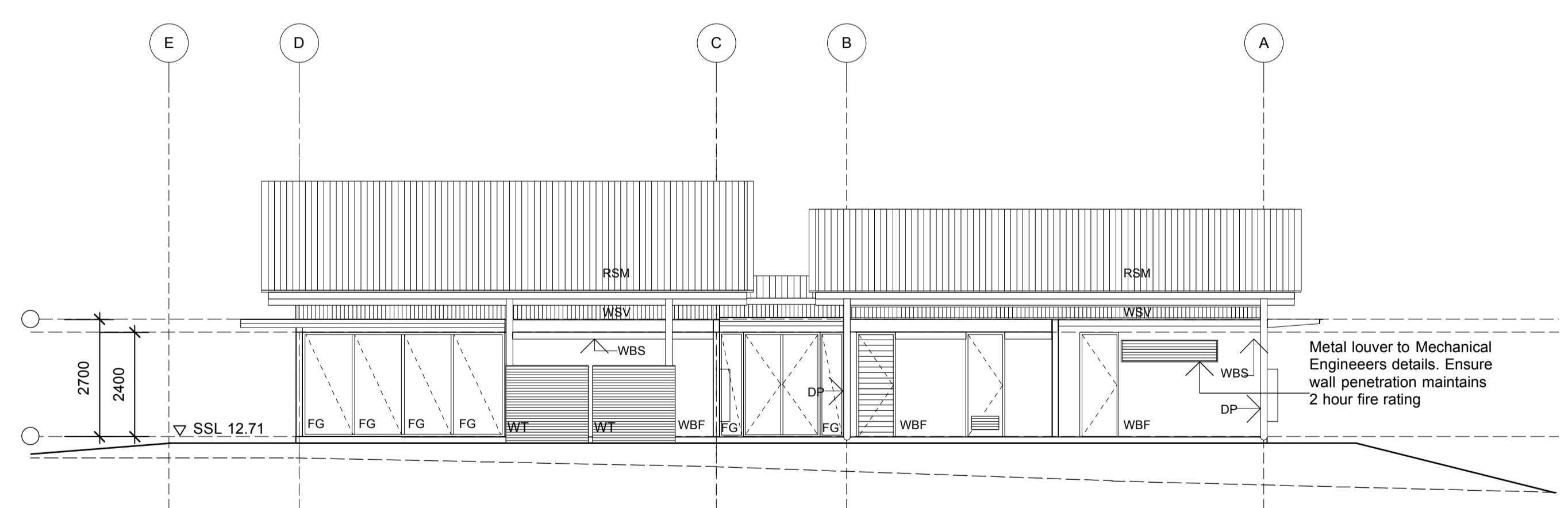
01 Elevation
South



02 Elevation
North



03 Elevation
East



04 Elevation
West

General Arrangement Plan Legend										General Legend										Notes										Consultants										Revised DA Submission To Council																																																																					
<div>Door Number D Level Number</div> <div>Window Number W Level Number</div> <div>Refer to Door and Hardware Schedule, Window and Door Schedule and Metal Work Details</div> <div>Wall Type Tag 00.00 Existing Levels +00.00 Proposed Level</div>										<div>Hydraulic Control Panel</div> <div>Electrical Distribution Cupboard</div> <div>Comms Cupboard</div> <div>Comms Riser</div> <div>Hydraulic Riser</div> <div>Electrical Riser</div> <div>Mechanical Riser</div>										<div>AA Anticorrosion Anchors</div> <div>B Bollard</div> <div>BU Balustrade</div> <div>CBR Concrete Broom Finish</div> <div>CC Concrete Column</div> <div>CFB Fibre Cement Ceiling</div> <div>CFW Water Resistant F/C Ceiling</div> <div>CL Clothes Line</div> <div>CP Concrete Paving</div> <div>CDB Concrete Board Ceiling</div> <div>DGR Down Pipe</div> <div>FA Fascia Angle</div> <div>FOP Fibre Cement Floor Tiles</div> <div>FCT Fibre Cement Floor Tiles</div> <div>FFL Finished Floor Level</div> <div>FG Fixed Glazing</div> <div>FMW Formed Metal Wall</div> <div>FPV Flashed</div>										<div>FTT Floor Tackle Indicators</div> <div>FVS Vinyl Floor Sheeting</div> <div>FW Floor Waste</div> <div>H Hydraulic</div> <div>HR Handrails</div> <div>LM Metal Louvre</div> <div>LUM Luminaire</div> <div>LV Louvre Window</div> <div>MLO Mini On</div> <div>MOC Photovoltaic Cell</div> <div>RC Roof Capping</div> <div>RO Roof Over</div> <div>RSM Metal Roof Sheeting</div> <div>RWD Rainwater Gutter</div> <div>RWP Rainwater Pipe</div> <div>RWO Rainwater Outlet</div> <div>SC Skirting</div> <div>SHW Solar Hot Water System</div> <div>SKA Skirting Aluminium</div> <div>SKD Skirting Ducted</div> <div>SKV Skirting Vinyl</div>										<div>SL Markable Static Lines</div> <div>SSH Sunshade</div> <div>SSL Structural Slab Level</div> <div>SWP Storm Water Pit</div> <div>TW Top of Wall</div> <div>WBF Face Brickwork</div> <div>WBS Cant Brick Solder Course</div> <div>WCR Rendered Concrete/Blockwork</div> <div>WCT Ceramic Wall Tiles</div> <div>WD Waste Drain</div> <div>WEF Wall Mounted Exhaust Fan</div> <div>WEJ Wall Expansion Joint</div> <div>WFC Fibre Cement Wall Sheeting</div> <div>WGL High Impact Glass Reinforced Wall</div> <div>WPN Pinboard Wall Lining</div> <div>WT Water Tank</div> <div>WVP Vitrapanel</div> <div>TI Tackle Indicators</div>										<div>- Architectural drawings to be read in conjunction with consultant documents, including survey.</div> <div>- All dimensions are in millimetres unless stated otherwise.</div> <div>- Do not scale drawings. Use figured dimensions.</div> <div>- Walls and columns are located on centre line or face of grid unless noted otherwise.</div> <div>- Check and verify all levels and dimensions on site prior to commencement of any work, shop drawings or fabrication of any components. Refer all discrepancies to the Architect for determination.</div> <div>- This drawing is copyright and must not be retained, copied or used without the permission of Baker Kavanagh Architects.</div>										<div>BCA Consultant</div> <div>City Plan Services</div> <div>Level 1, 364 Kent St</div> <div>Sydney NSW 2000</div> <div>T 8270 3500 F 8270 3501</div> <div>E brendanb@cityplan.com.au</div> <div>Access Consultant</div> <div>Accessibility Solutions Pty Ltd</div> <div>20 Begonia Street</div> <div>Pagewood NSW 2035</div> <div>T 9695 1940 F 9695 1906</div> <div>E markreiff@bigpond.com</div> <div>Landscape Architect</div> <div>Michael Silu Landscape Pty Ltd</div> <div>Level 5, 34 MacMahon St</div> <div>Hurstville NSW 2220</div> <div>T 0417 280 249 F 9557 9311</div> <div>E msila@accsoft.com.au</div> <div>Acoustic Engineer</div> <div>Acoustic Logic Consulting</div> <div>9 Sarah Street</div> <div>Mascot NSW 2020</div> <div>T 8338 9888 F 8338 8399</div> <div>E enquiries@acousticlogic.com.au</div> <div>Structural and Civil Engineers</div> <div>D Hunt and Associates Pty Ltd</div> <div>Suite 1, Level 1, 84 Nelson St</div> <div>Wallsend NSW 2287</div> <div>T 4951 6366 F 4951 6377</div> <div>E admin@dhuntassoc.com.au</div> <div>Mechanical, Electrical & Hydraulic</div> <div>Meinhardt (NSW) Pty Ltd</div> <div>Level 4, 66 Clarence St</div> <div>Sydney NSW 2000</div> <div>T 9693 3088 F 9319 7508</div> <div>E contact.nsw@meinhardtgroup.com</div>										<div>Baker Kavanagh architects</div> <div>L2 729 Elizabeth St Zetland</div> <div>T: 612 9318 9200 F: 612 9318 9222</div> <div>W: www.bka.com.au E: bka@bka.com.au</div>										<div>PROJECT</div> <div>Student Housing & Common Facilities - STAGE 01</div> <div>ADDRESS</div> <div>University Western Sydney - Bankstown</div> <div>CLIENT</div> <div>UWS Capital Works and Facilities</div> <div>DWG</div> <div>Building 27 - Elevations</div> <div>CHKD</div>										<div>DATE #</div> <div>Dec 2010</div> <div>SCALE</div> <div>1:100@A1</div> <div>DRAWN</div> <div>MK</div> <div>CHKD</div>										<div>PROJECT #</div> <div>10059</div> <div>A-CD-S1 220</div> <div>REVISION</div> <div>P8</div>									